

Home & Land Package



THE VICTORIA

Lot 22, Proposed Road

Developed by

Harrington
Estates

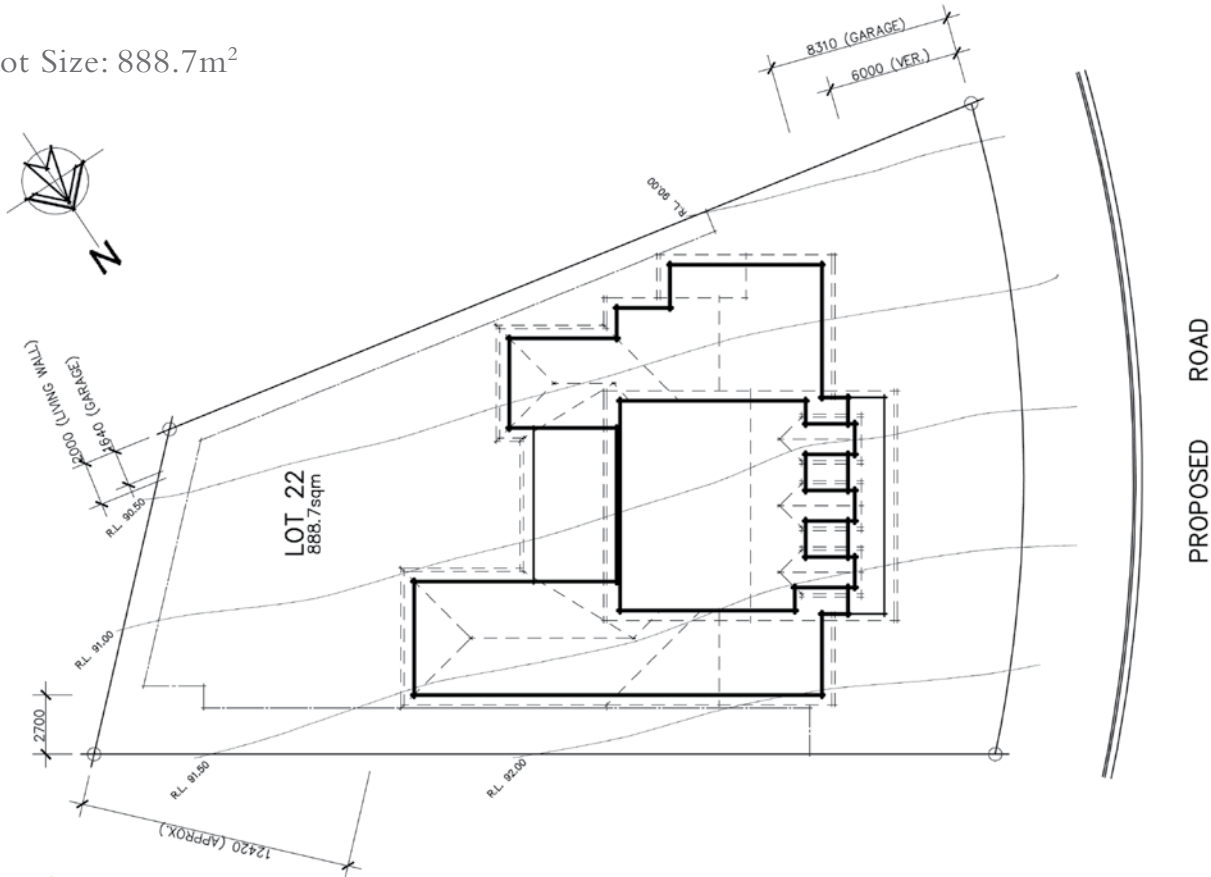
Built by

JMBS

THE VICTORIA

Lot 22, Proposed Road

Lot Size: 888.7m²



Inclusions

4 bedroom plus study

Polished timber floors to living areas

Double garage with remote controls

Al fresco dining and entertainment

Architectural moldings and friezework

3 bathrooms and powder room

Smart wired high speed internet throughout

Fully landscaped and turfed

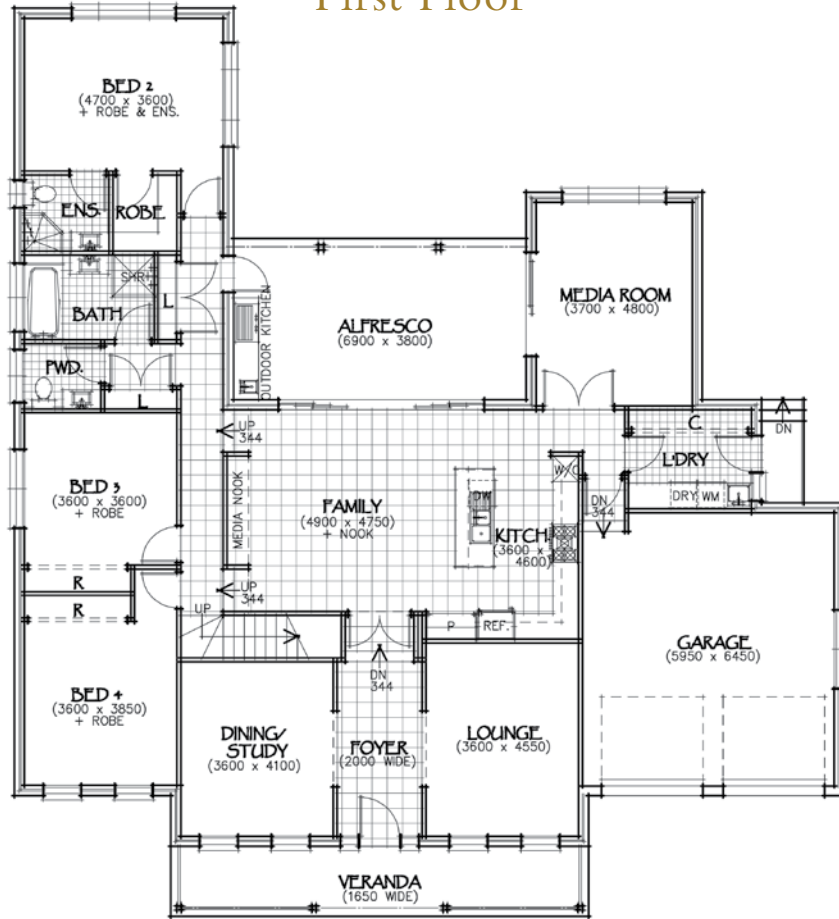
- House size: 390.17m² (42 square)
- Land area: 888.7m²
- Upper and lower master bedrooms with ensuite and WIR
- Polyurethane kitchens
- Stainless steel appliances
- Caesarstone bench tops
- Solid china bowls and toilet suites
- Air conditioning
- Intercoms and alarm systems

- Digital television connected
- Stencilled paths and driveways
- Ornate cornice
- Semi-frameless shower screens
- Frameless mirrors
- Insulation throughout
- 10,000 litre inground water storage
- Rennai instantaneous gas hot water
- Double hung powder coated windows
- Solid entry doors with sidelights and *Hilite*

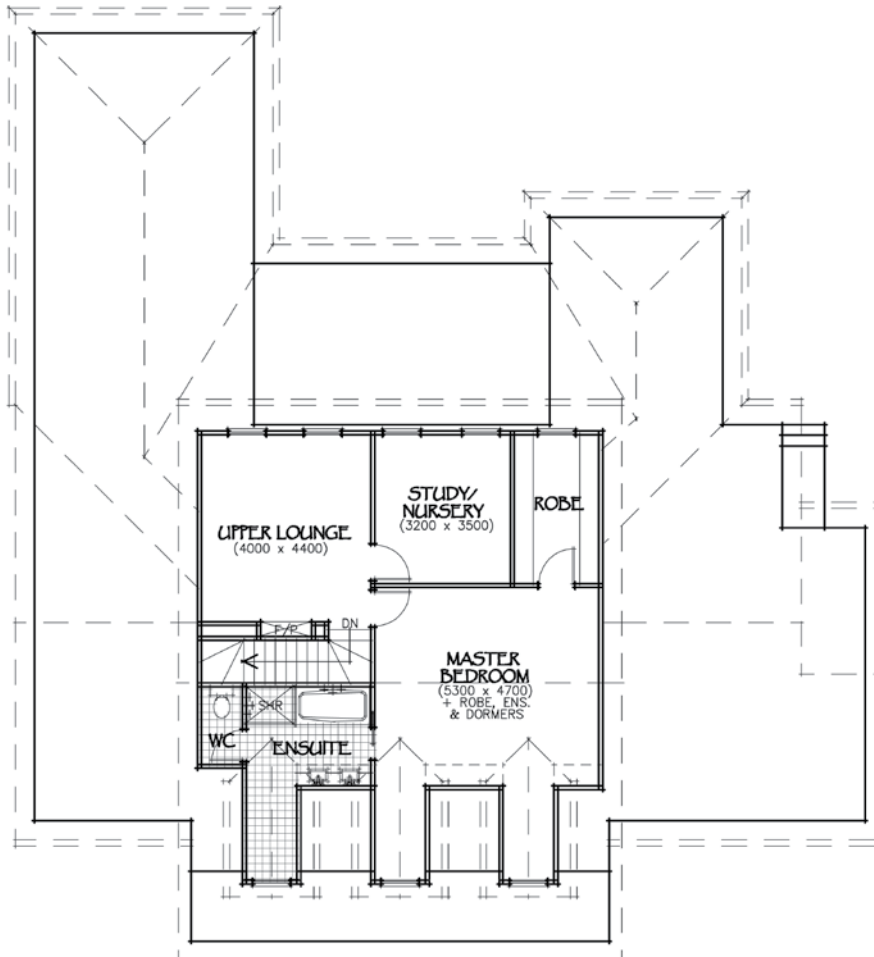


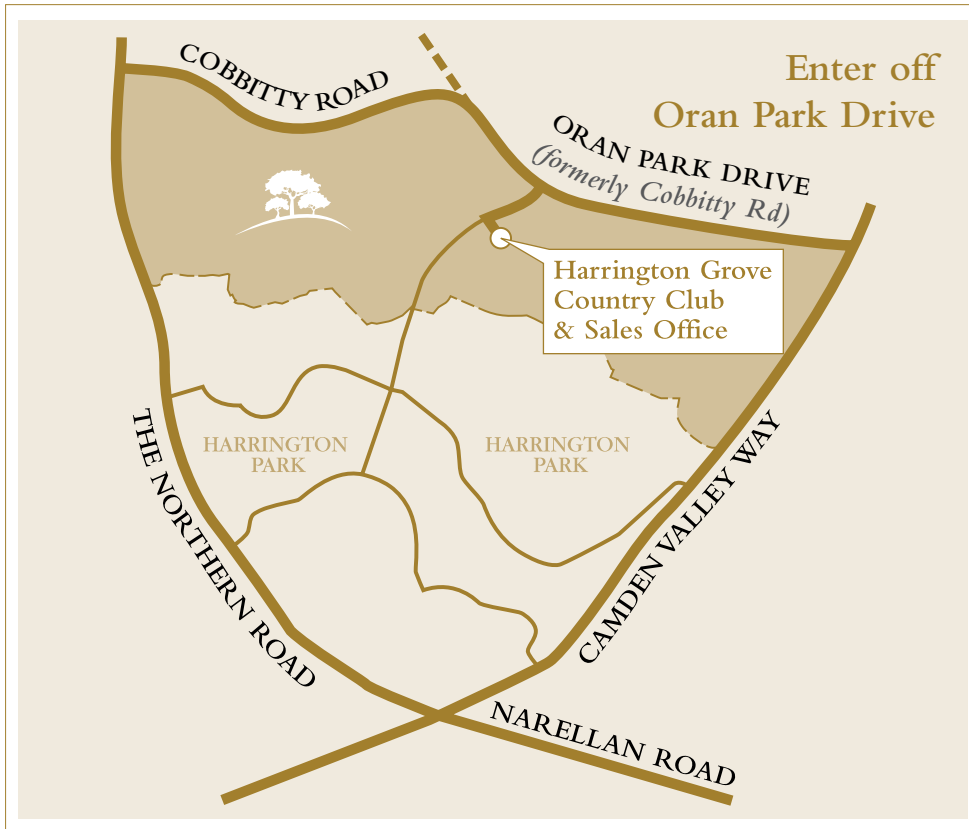


First Floor



Ground Floor





Phone: 02 4648 0311

Email: john@jmbs.com.au

www.jmbs.com.au

The particulars are set out as a general outline for the guidance of intending purchasers and do not constitute an offer or contract. All descriptions, dimensions, references to conditions and necessary permutations for use and other details are given in good faith and are believed to be correct, but any intending purchasers should not rely on them as statements or representations of fact, but must satisfy themselves by inspection or otherwise as to the correctness of each item, and where necessary seek advice. No third party supplier or their agents has any authority to make or give any representations or warranty in relation to this property.